



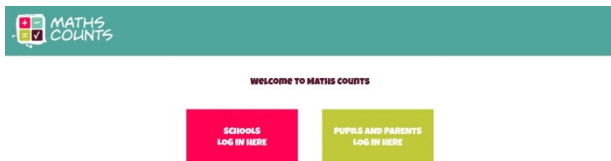
THE MATHS COUNTS DIGITAL TOOL

USER GUIDE

AT HOME



AS A LEARNER (PARENT/CARER) AT HOME . . .

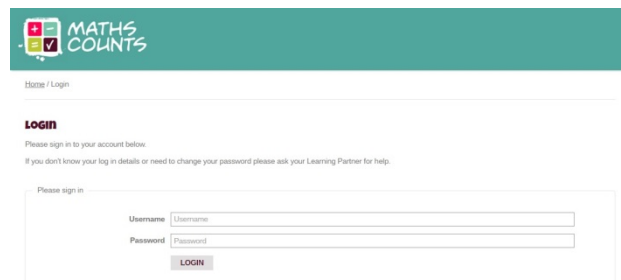


To login, please visit:

<https://digitaltool.mathscounts.co.uk/>.

Select 'Pupils and Parents Login here'.

Next you will see the login screen. Here you can add your user name and password. (These will be given to you by your school once you have joined Maths Counts.)

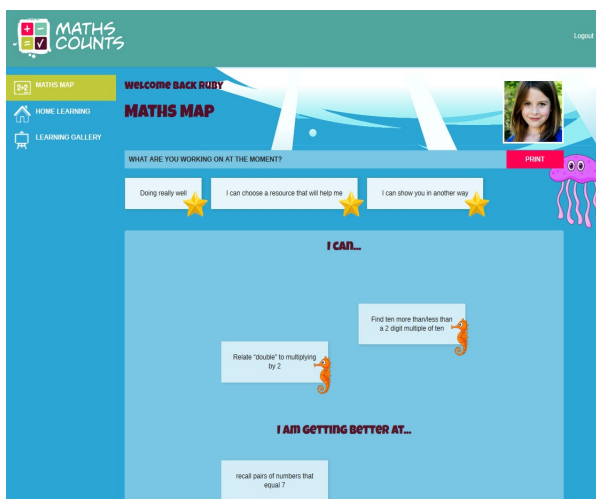


Your log in details are:

Username:

Password:

Once logged in you will be taken to your dashboard.

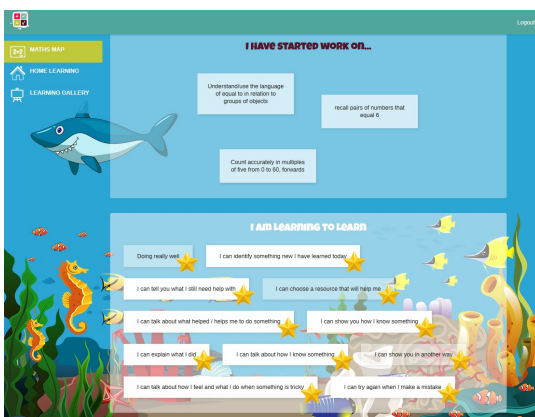


If you are using a digital Maths Map at school then you will view this here. (If instead you are using a sticky-note Maths Map at school then you can talk to your teacher about showing it to your grown-ups at another time.)

The Maths Maps show what you are working on, what you are getting better at and what you can now do.

You can print your Maths Map by clicking on the 'PRINT' button in the top right corner of the screen.

If you would like to change the background theme, click on THEMES at the top of the screen, on the left.

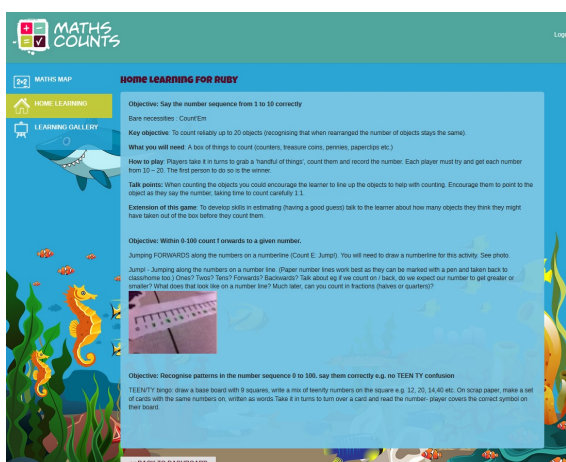


At the bottom of your Maths Map you can see boxes which show what you are 'Learning to Learn'.

As part of Maths Counts you will be learning these skills which will help you to learn not only in Maths but in any subject at school.

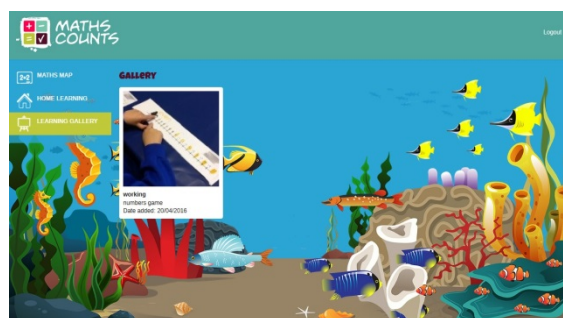
If you are not using the digital Maths Map remember that your sticky-note Maths Map at school will be doing

exactly the same job as the digital one and you will be able to personalise that with perhaps pictures, photographs or stickers.



In this case, once you have logged in you will be taken to your own dashboard where you can see any Home Learning activities that have been suggested by your Learning Partner, by clicking on HOME LEARNING.

Learners with a Maths Map on their dashboard will see the same button and be taken to their HOME LEARNING page too.



From your dashboard you **may** also see a 'Gallery'. Some schools will use this but some may not, as it is optional.

This contains any photos and videos taken of you working on Maths Counts at school. Click to view.

We hope you enjoy viewing your Maths Counts dashboard at home. Please contact the school if you are having problems with your username and password and are unable to log in.